



جامعة قطر  
QATAR UNIVERSITY

# Factbook 2010 - 2011

Qatar University - Office of Institutional Research and Data Warehouse



## TABLE OF CONTENT

<b>Acknowledgments</b>	<b>4</b>		<b>31</b>
<b>Preface</b>	<b>5</b>		<b>31</b>
<b>Qatar University</b>	<b>6</b>		<b>31</b>
Vision and Mission	<b>7</b>		<b>32</b>
About Qatar University	<b>7</b>		<b>32</b>
Strategic Plan	<b>8</b>		<b>33</b>
A Glance at History	<b>9</b>		
Qatar University Presidents	<b>9</b>		
Our Campus	<b>9</b>		
<b>Organization</b>	<b>10</b>		<b>37</b>
Organization Chart	<b>11</b>		<b>38</b>
Board of Regents	<b>12</b>		<b>38</b>
President of Qatar University	<b>12</b>		<b>40</b>
Vice Presidents	<b>12</b>		
Deans of Colleges	<b>12</b>		
Organization Structure	<b>12</b>		
<b>Academic Programs</b>	<b>16</b>		
Abbreviations	<b>17</b>		
Academic Programs Offered by Colleges	<b>18</b>		
Accreditation Status for Academic Programs	<b>22</b>		
<b>Students</b>	<b>23</b>		
Abbreviations	<b>24</b>		
Registered Students by Academic Level, College, Major, Nationality and Gender	<b>25</b>		
Registered Students by Country	<b>27</b>		
Admission Statistics by Academic Level, Nationality and Gender	<b>28</b>		
New Admitted by Exemption Type	<b>29</b>		
Scholarship by Type and College	<b>29</b>		
Top 10 Bachelor Programs with Highest Number of Registered Students by Gender	<b>30</b>		
Top 10 Bachelor Programs with Highest Number of Registered Students by Nationality	<b>30</b>		
		<b>Faculty and Staff</b>	<b>31</b>
		Teaching Staff by Years of Work in Qatar University, Nationality and Gender	<b>31</b>
		Teaching Staff by Country	<b>32</b>
		Faculty and Staff by Rank and Title	<b>33</b>
		<b>Graduates</b>	<b>34</b>
		Graduates by Academic Level, College, Major, Nationality and Gender	<b>35</b>
		Graduates by Country	<b>36</b>
		<b>Library</b>	<b>37</b>
		Library Collection	<b>38</b>
		Library Staff	<b>38</b>
		List of Subscribed E-Database	<b>40</b>
		<b>Finance</b>	<b>41</b>
		Approved Budget	<b>42</b>
		Budget by Cost Center	<b>42</b>
		<b>Physical Facilities</b>	<b>43</b>

# ACKNOWLEDGMENTS

The task of compiling comprehensive facts about an institution such as Qatar University is a group effort. No single office or division can hope to house all of the information needed to accomplish this task. Appreciation and many thanks go to the staff members from the Divisions of Institutional Planning and Development, Academic Affairs, Administration and Finance, Student Affairs, Research, and Colleges who provided valuable assistance in the preparation of this Fact Book. A special thanks also goes to the office of External Relations, for their hard work and tireless efforts.



# ■ PREFACE

The 2010-2011 Fact Book is intended to provide the university community and others with a summary of institutional data about Qatar University. The Fact Book is a consolidation of institutional information gathered from various sources and is issued annually in October. It contains many tables and graphs, which are found helpful by administrators, faculty, staff, students, and other constituents of the university. The Office of Institutional Research, in its outgoing effort to provide timely information and analysis, will continue refining this document each year. We hope you will review this document closely and use it on a continual basis. You may access the Fact Book online at <http://www.qu.edu/oipd>.

Please take the time to provide us with any feedback you may have concerning the Fact Book. This will give us the opportunity to deliver improved products and services. All comments regarding the Fact Book should be addressed at phone: 4403-3670, email: [vpipd@qu.edu.qa](mailto:vpipd@qu.edu.qa)

Regards,

**Jamir Chowdhury, EdD**  
Director  
Institutional Research and Data Warehouse



# QATAR UNIVERSITY



## ABOUT QATAR UNIVERSITY

Qatar University is an intellectual and scholarly community characterized by open discussion, the free exchange of ideas, respectful debate, and a commitment to rigorous inquiry. All members of the University; faculty, staff, and students are expected to advance the scholarly and social values embodied by the university.

### Vision

Qatar University shall be a model national university in the region, recognized for high-quality education and research and for being a leader of economic and social development.

### Mission

Qatar University is the national institution of higher education in Qatar. It provides high quality undergraduate and graduate programs that prepare competent graduates, destined to shape the future of Qatar. The university community has diverse and committed faculty who teach and conduct research, which address relevant local and regional challenges, advance knowledge, and contribute actively to the needs and aspirations of society.



Since its inception in 1973, Qatar University has become the country's national and major institution of higher education. It is comprised of seven colleges: College of Arts and Sciences, College of Business and Economics, College of Education, College of Engineering, College of Law, College of Pharmacy, and College of Sharia and Islamic Studies.

Programs offered at the University attract professional recognition through their emphasis on close working links with business, industry, and other professions. At the same time, they emphasize the importance of a solid base of general skills and knowledge through a carefully designed core curriculum, which was conceived with an eye on the needs and requirements of Qatari society and its labor market. The University's teaching and research are innovative, collaborative, enterprising, and flexible endeavors, based on the intelligent use of emerging technologies.

In addition to its notable library, Qatar University boasts a number of support-for-learning centers and units, including an audio library, an e-library, advanced internet facilities, an educational-technology center, advanced video-conferencing facilities, and an active Office for Faculty and Instructional Development.

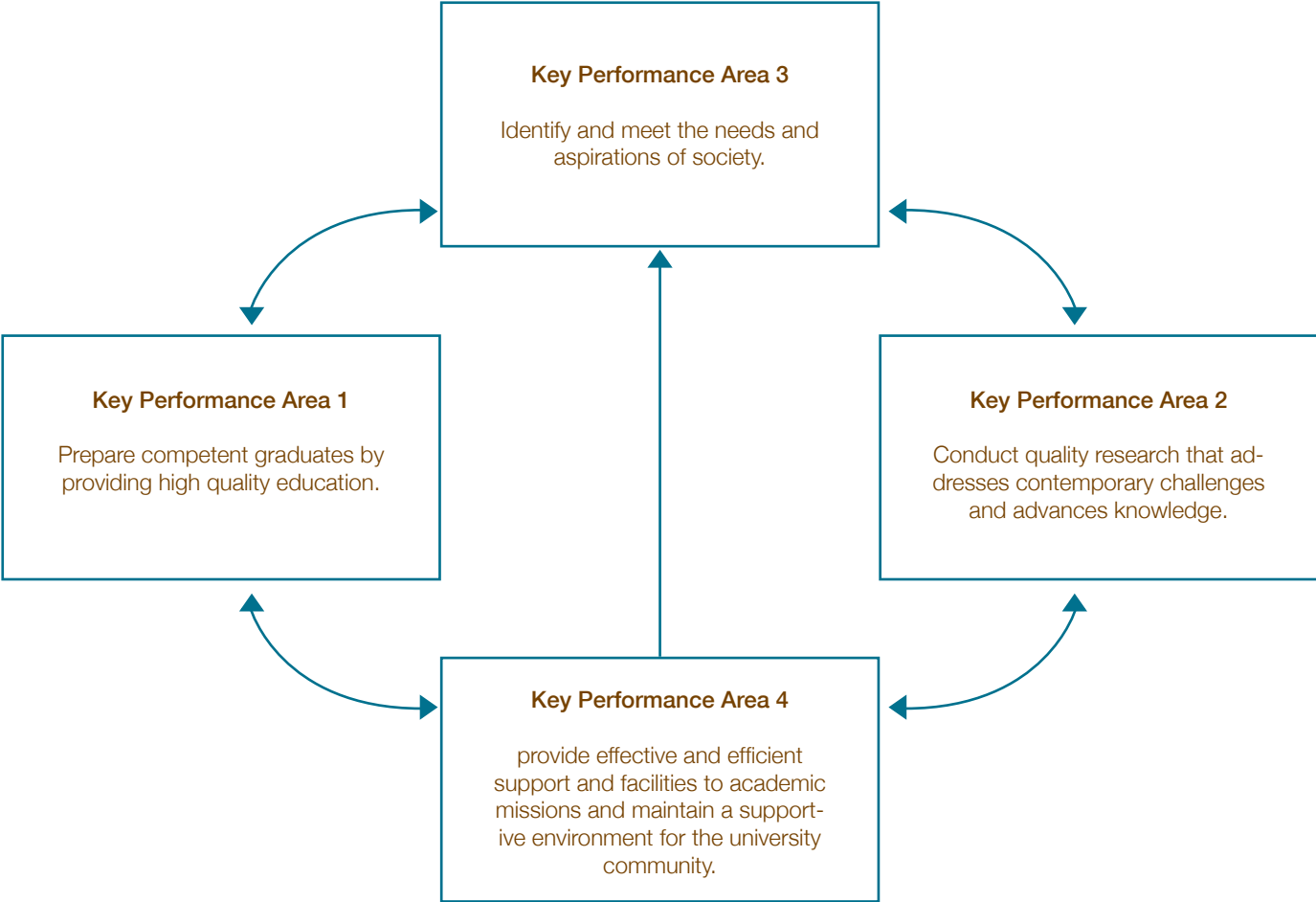
QU has always strived to fulfill its mission as the country's beacon of knowledge. With seven colleges, over 32,000 graduates, and a faculty community of almost 700 members, the University is also an active participant in several prestigious regional and international associations, including the Union of Arab Universities, the league of Islamic Universities, and the International Association of Universities, to name just a few.

Qatar University offers over 60 specializations - the widest range in the country-, and boasts substantial research and academic infrastructure, as well as its reputation as a leading center for research in the country. As a result, QU has been successful in attracting a large number of distinguished scholars, researchers, and faculty members from other reputable institutions around the world.

# STRATEGIC PLAN

In 2009, QU initiated a university-wide strategic planning process. The Strategic Plan which covers the academic years 2010/2011 through 2012/2013 is a university community product. It took QU faculty, staff and management many months to derive a plan which has been cascaded down to various units.

The plan has four Key Performance Areas that focus on promoting quality education and efficient and effective services. Guided by the University mission and vision, a set of objectives and indicators (Key Performance Indicators, KPI's) have emerged from the work of many committees, meetings, and discussions with significant assistance provided by an independent external consultants: the Rand-Qatar Policy Institute.





## A GLANCE AT HISTORY

In 1973, having foreseen education as a principle contribution to its expanding society, the Emir of Qatar issued a decree proclaiming the establishment of Qatar's first national College of Education. Among a small population, the college admitted a respectable 57 male and 93 female students in its first year.

After several semesters, rapid development of the country made it necessary to expand upon the College of Education to accommodate new areas of specialization. In 1977, Qatar University was founded with four colleges: Education; Humanities and Social Sciences; Sharia, Law, and Islamic Studies; and Science. By 1985, two additional colleges, Engineering and Business and Economics, had been added.

### Qatar University Presidents



Prof. Sheikha Abdulla Al-Misnad 2003 - present

Dr. Abdullah Bin Saleh Al-Khulaifi 1999 - 2003

Dr. Ibrahim Saleh K. Al-Naimi 1994 - 1999

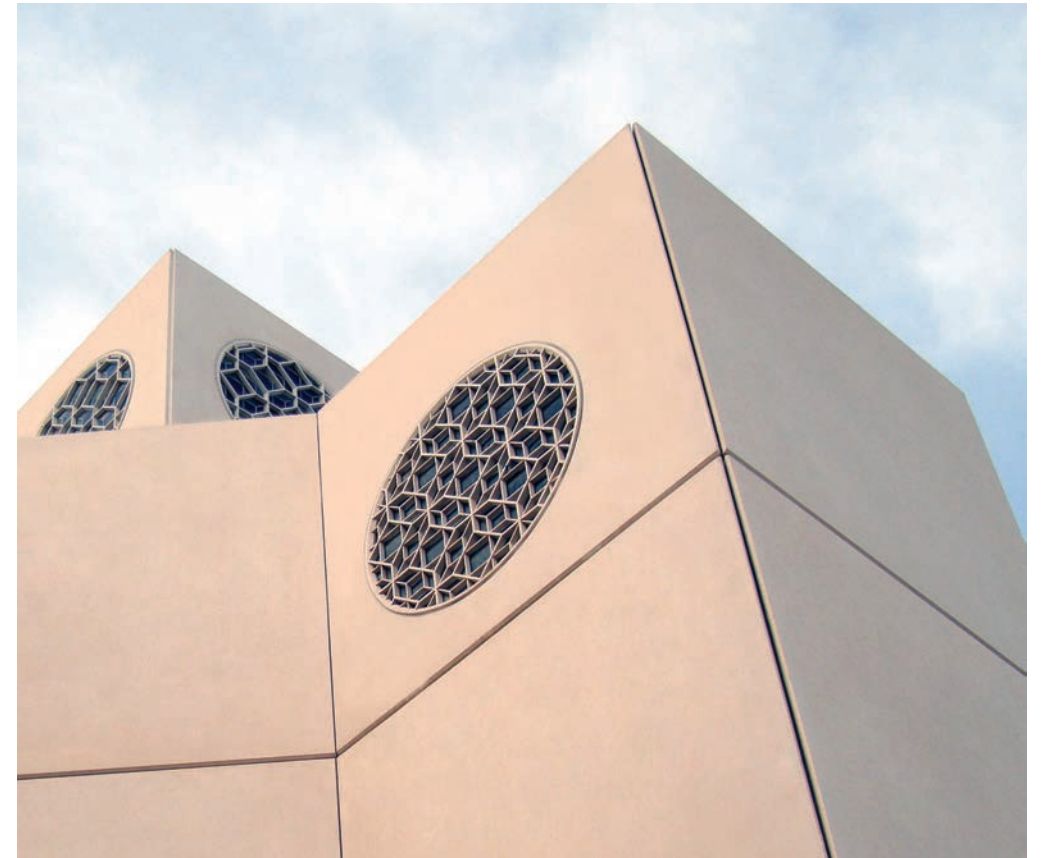
Dr. Abdullah Juma'a Al-Kubaisi 1986 -1994

Dr. Mohammed Ibrahim Kazim 1977 - 1986

## OUR CAMPUS

Qatar University is situated on the northern edge of Doha, approximately 16 kilometers from the city center. The location is excellent, and overlooks the coast, the Doha Golf Course, the West Bay Lagoon housing complex, the Pearl, and Al-Wusail commercial and residential development projects on the eastern side. In addition to the main campus, the University has an experimental farm located 65 km north of Doha.

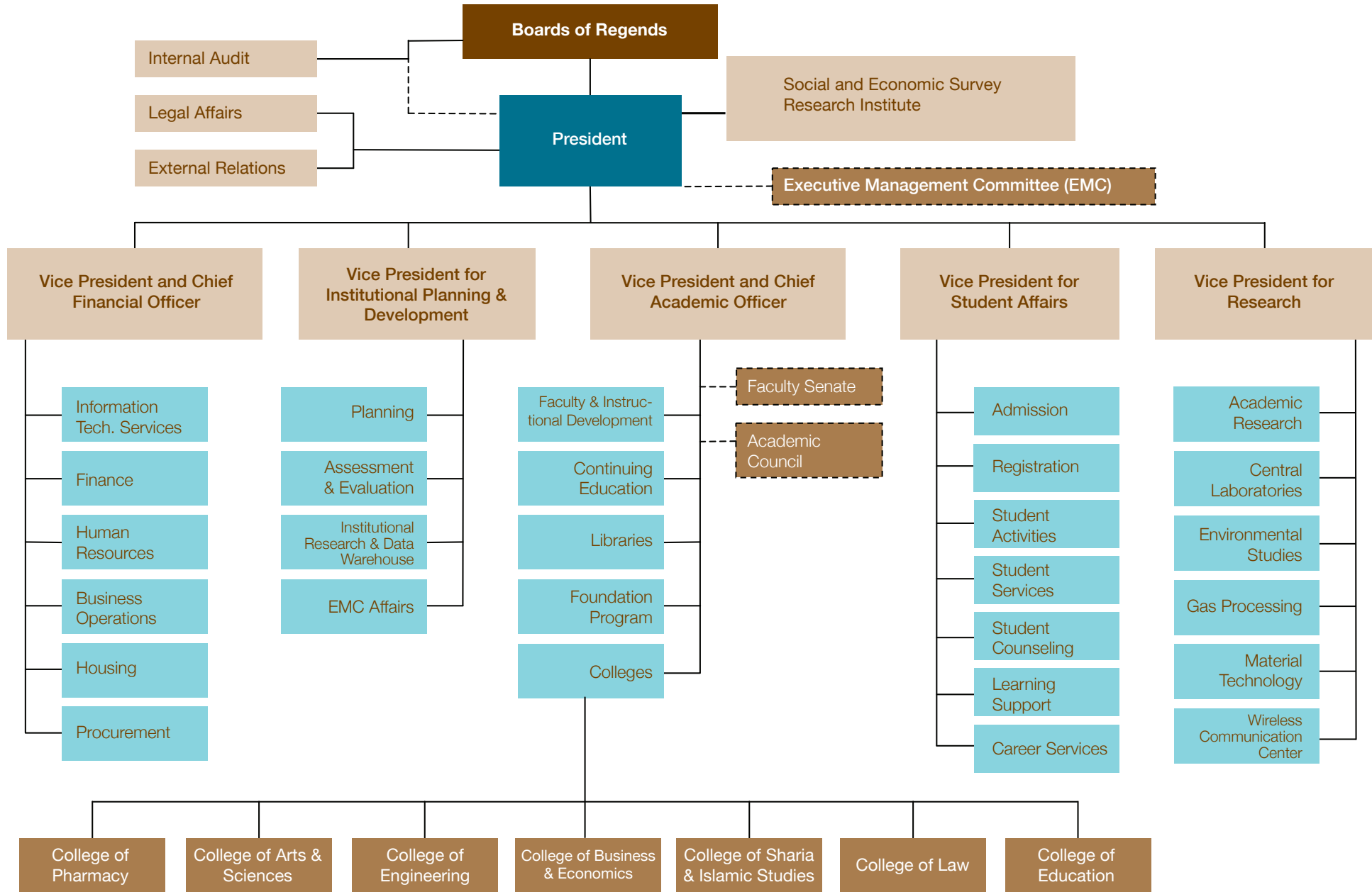
QU's main campus is built on a total area of about 8 square kilometers, with architecture that is distinguished and modern, while reflecting the ideals of traditional Islamic design. The campus is divided into two adjacent sections, for male and female students. Both sections have their own lecture halls, laboratories, and learning-support facilities, while sharing some services.



# ■ ORGANIZATION



# ORGANIZATIONAL CHART



## BOARD OF REGENTS

H.H. Sheikh Tamim Bin Hamad Al Thani  
Heir Apparent  
*Chairperson*

H. E. Ahmed Bin Abdullah Al-Mahmoud  
State Minister for Foreign Affairs  
*Vice Chair*

H. E. Saad Ibrahim Al-Mahmoud  
Minister of Education and Higher Education ,  
Secretary General, Supreme Education Council  
*Member*

H.E. Sheikh Hamad Bin Jabor Bin Jassim Al Thani  
Director,  
The General Secretariat for Development Planning  
*Member*

H.E. Sheikh Faisal Bin Qassim Al Thani  
Chairman,  
Qatari Businessmen Association  
*Member*

Dr. Abdulla Bin Ali Al Thani  
Educational Vice-President,  
Qatar Foundation  
*Chairman of Executive Committee*

Dr. Hessa Sultan Al-Jabir  
General Secretary,  
ICT, Qatar  
*Member*

Mr. Ahmad Mahdi Al Majed  
Business Man  
*Member*

Mr Hamad Rashid Al Mahanadi  
General Manager,  
Ras Gas  
*Member*

Prof. Roger Benjamin  
President,  
Council for Aid to Education (CAE)  
*Member*

Prof. Peter Heath  
Chancellor,  
American University of Sharjah  
*Member*

Prof. Sheikha Bint Abdulla Al Misnad  
President,  
Qatar University  
*Member*

Prof. Abdel Aziz El Said El Bayoumi  
Academic Advisor of the President,  
Qatar University  
*Secretary General*

## PRESIDENT OF QU

Prof. Sheikha Bint Abdulla Al Misnad

## VICE PRESIDENTS

Dr. Humaid Abdullah Al-Midfaa  
Vice President and Chief Financial Officer

Dr. Sheikha Bint Jabor Al-Thani  
Vice President and Chief Academic Officer

Dr. Omar Mohamed Al-Ansari  
Vice President for Student Affairs

Dr. Hassan Al-Derham  
Vice President for Research

Prof. Saif Said Al Sowaidi  
Vice President for Institutional Planning and Development

## DEANS OF COLLEGES

Dr. Eman Mohamed Mustafawi  
Acting Dean, College of Arts and Sciences

Prof. Nitham Mohammed Hindi  
Dean, College of Business & Economics

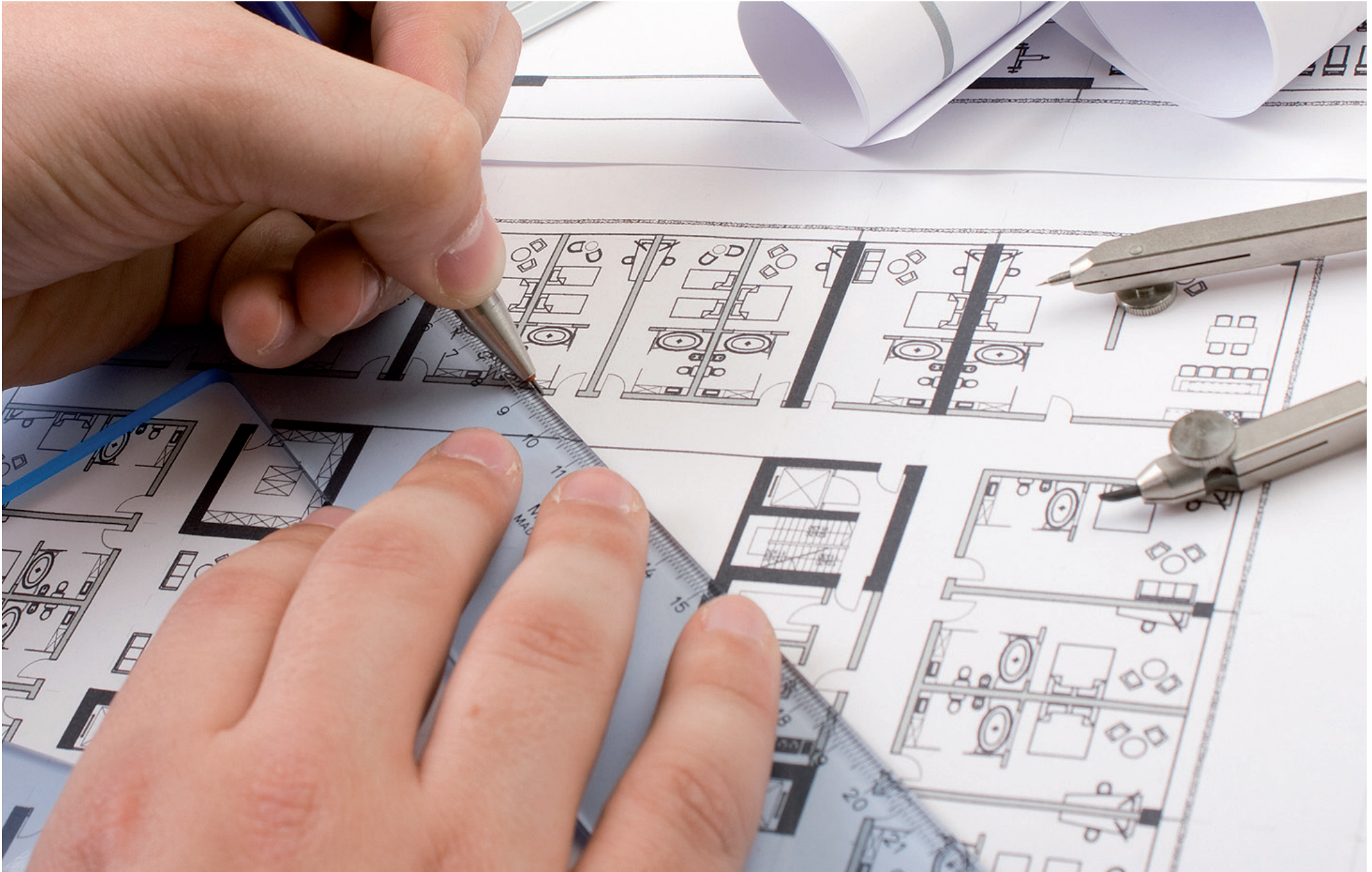
Prof. Hessa Al-Sadiq  
Dean, College of Education

Dr. Mazen Hasnah  
Dean, College of Engineering

Dr. Hassan Abdelrahim Moh'd Okour  
Dean, College of Law

Prof. Peter Jewesson  
Dean, College of Pharmacy

Prof. Aisha Yousif Al-Mannai  
Dean, College of Shariaa and Islamic Studies



## ORGANIZATION STRUCTURE

### Office of The President

#### - Office of Legal Affairs

#### - Office of Internal Audit

#### - External Relations Department

##### - Communications Section

- Marketing Communication Unit
- Websites Unit

##### - Media Section

##### - Alumni Relations Section

##### - Events and Hospitality Section

- Hospitality Unit
- Events Unit

##### - Partner Relations Section

#### - Office of Vice President and Chief Financial Officer

##### - Finance Department

###### • University Controller

- General Accounting Section
- Disbursements Account Payables Section
- Payroll Section

###### • University Budget Officer

- Budget and MIS Section
- Accounts Receivable-Revenue
- Projects, Grants and Contracts Accounting

###### • Business Support Section

##### - Human Resources Department

###### • HR Advisory Centre

- HR Advisory Section (Admin)
- HR Advisory Section (Foundation Program, Education)
- HR Advisory Section (Arts and Sciences, Research)
- HR Advisory Section (Business & Economics, Engineering, Law, Pharmacy, Sharia)

###### • HR Services Center

- Compensation and Benefits Section
- Immigration Section

###### • HR Information Section

- Helpdesk and System Support Unit

##### - Information Technology Services Department

- Office of Strategic Support
- Office of IT Security, Policy and Documentation
- Infrastructure and Operations

- Application and Database Administration Section
- Networking and Telecommunication Section
- Systems Administration Section

#### • Middleware and Integration

- Portal and Web Services Section
- Library Information System Section
- Communication and Learning Technologies Section

#### • Enterprise Business Applications

- Administrative Information Systems Section
- Student Information System Section
- One Card and Security Systems Section

#### • Academic Computing

- Departmental Computing Support Section
- Help Desk Section
- Audio/Visual and Classroom Technologies Section

#### - Business Operations Department

##### • Helpdesk

##### • Support Services

- Housekeeping Section
- Mail and Archive Section
- Transportation Section
- Logistic and Events Section

##### • Quality Control

##### • Facilities Management

- Civil Maintenance Section
- Mechanical Electrical Plumbing Section
- Landscape and Agricultural Section
- Maintenance Store Section
- Equipment Maintenance Section

##### • Projects Management

##### • Environmental Safety

##### • Security Services Section

#### - Procurement Department

##### • General Store Section

##### • Fixed Assets and Receiving Section

##### • Procurement IS Support Section

##### • Purchase Service Center

- Scientific and Research Section
- Books and Publication Section
- IT and Media Section
- Facilities and Vehicle Supply Section
- Office Supply and Others Section

- Housing Department
  - Student Housing Section (Female)
    - Services Unit
    - Supervision Unit
  - Student Housing Section (Male)
    - Services Unit
    - Supervision Unit
  - Staff Housing Section
    - Reception and Hospitality Unit
    - Maintenance and Logistics Unit

- Health Clinic

#### - Vice President for Institutional Planning and Development

- Planning
- Assessment and Evaluation
- Institutional Research and Data Warehouse
- EMC Affairs

#### - Office of Vice President and Chief Academic Officer

- Office of Faculty and Instructional Development
- Office of Continuing Education
- Office of Library
  - Technical Services Section
    - Cataloging Unit
    - Collection Management Unit
    - Acquisition and Collection Development Unit
  - Library System
  - Library Public Services
    - Circulation and Reserves Unit
    - References and Instructional Services Unit
    - Media Management Unit
- Faculty Senate
- Foundation Program
- Core Curriculum Program
- Sports Science Program
- Colleges
  - College of Arts and Sciences
  - College of Business and Economics
  - College of Education
  - College of Engineering
  - College of Law
  - College of Pharmacy
  - College of Sharia and Islamic Studies

#### - Office of Vice President for Student Affairs

- Office of Student Information System
- Office of Admin and Finance Affairs
- Student Activities Department
  - Sports and Recreation Section
  - Annual Events and Special Projects Section
  - Student Development Section
  - Exchange Program Section
- Career Services Center
- Student Counseling Center
- Student Learning Support Center
- Student Services Department
  - Students Fund Section
  - Primary Services Section
  - Students with Special Needs Section
  - Textbooks Section
  - HelpDesk Section
  - International Students Section
- Admission Department
  - Admission Section
  - Scholarships Section
  - Transfers Section
  - Recruitment Section
- Registration Department
  - Registration Section
  - Scheduling Section
  - Records and Archiving Section

#### - Vice President for Research

- Central Laboratories Unit
- Environmental Studies Center
- Materials Technology Unit
- University Academic Research
- Gas Processing Center
- Wireless Communication Center

#### - Office of Social and Economic Survey Research Institute (SESRI)

- Research Department
  - Technology Unit
  - Sampling Unit
  - Analysis Unit
  - Data Collection Unit

## ■ ACADEMIC PROGRAMS







**Abbreviations**

AACSB

ABET, Inc

CCAPP

CEA

CSC

IRTE

NAACLS

RSS

**Agency Description**

The Association to Advance Collegiate Schools of Business

Accreditation Board for Engineering and Technology, Inc

Canadian Council for Accreditation of Pharmacy Program

Commission on English Language Accreditation

Canadian Society for Chemistry

International Recognition in Teacher Education

National Accrediting Agency for Clinical Laboratory Sciences

Royal Statistical Society



## ACADEMIC PROGRAMS OFFERED BY COLLEGES

Degree	Major	CCP CH	Maj R.CH	Other CH	Total CH	Male	Female
<b>College of Arts and Sciences</b>							
Bachelor of Arts	Arabic Language	34	51	35	120		√
Bachelor of Arts	English Language	33	27	60	120		√
Bachelor of Arts	History	33	52	35	120	√	√
Bachelor of Arts	International Affairs	21	42	57	120	√	√
Bachelor of Arts	Mass Communication	34	24	69	127	√	√
Bachelor of Arts	Social Work	33	81	6	120		√
Bachelor of Arts	Sociology	33	27	60	120		√
Bachelor of Science	Chemistry	27	56	37	120	√	√
Bachelor of Science	Environmental Sciences <i>(Marine Science Concentration)</i>	30	63	32	125	√	√
Bachelor of Science	Environmental Sciences <i>(Biotechnology Concentration)</i>	30	63	33	126	√	√
Bachelor of Science	Biological Sciences	34	48	38	120		√
Bachelor of Science	Human Nutrition	34	28	70	132		√
Bachelor of Science	Biomedical	32	63	40	135		√
Bachelor of Science	Statistics	33	51	36	120		√

**CCP:** Core Curriculum Program (General Education Component)

**Maj R.:** Required Courses in Major

**Other:** includes free elective, required and elective concentration

**CH:** Credit Hours

Degree	Major	CCP CH	Maj R.CH	Other CH	Total CH	Male	Female
<b>College of Education</b>							
Bachelor of Education	Primary Education	33	36	51	120		√
Diploma	Early Childhood	0	30	0	30		√
Diploma	Special Education	0	30	0	30	√	√
Diploma	Primary Education	0	18	12	30		√
Diploma	Secondary Education	0	30	0	30	√	√
Master of Education	Special Education	0	18	15	33	√	√
Master of Education	Educational Leadership	0	33	0	33	√	√
<b>College of Law</b>							
Bachelor of Law	Law	24	99	-	123	√	√
<b>College of Business &amp; Economics</b>							
Bachelor of Business Administration	Accounting	33	21	71	125	√	√
Bachelor of Business Administration	Finance	33	21	71	125	√	√
Bachelor of Business Administration	Management	33	21	71	125	√	√
Bachelor of Business Administration	Marketing	33	21	71	125	√	√
Master of Business Administration	Business Administration	0	36	-	36	√	√

Degree	Major	CCP CH	Maj R.CH	Other CH	Total CH	Male	Female
<b>College of Engineering</b>							
Bachelor of Science	Architecture	16	135	9	160		√
Bachelor of Science	Civil Engineering	20	69	42	131	√	
Bachelor of Science	Chemical Engineering	20	69	42	131	√	√
Bachelor of Science	Computer Science	27	61	32	120	√	√
Bachelor of Science	Computer Engineering	20	69	39	128		√
Bachelor of Science	Electrical Engineering	20	66	45	131	√	√
Bachelor of Science	Industrial & Systems Engineering	20	63	45	128		√
Bachelor of Science	Mechanical Engineering	20	66	45	131	√	
Master of Science	Computing	-	31	-	31	√	√
Master of Science	Engineering Management	-	36	-	36	√	√
Master of Science	Urban Planning and Design	-	24	21	45	√	√
<b>College of Pharmacy</b>							
Bachelor of Science	Pharmacy	16	123	34	173		√
<b>College of Sharia and Islamic Studies</b>							
Bachelor in Islamic Studies	Dawa	34	51	35	120	√	√
Bachelor in Islamic Studies	Islamic Studies	33	51	36	120	√	√
<b>VPCAO</b>							
Bachelor of Science	Sport Sciences	33	51	36	120	√	√



## ACCREDITATION STATUS FOR QU ACADEMIC PROGRAMS

	Accreditation Agency	Accreditation Status and Date
<b>College of Arts and Sciences</b>		
- Biomedical Sciences	NAACLA	Accredited on 9/1/2008
- Statistics	RSS	Accredited in Spring 2011
- Chemistry	CSC	Accredited in Spring 2009
<b>College of Engineering</b>		
- Electrical Engineering	ABET	Accredited in Fall 2011
- Chemical Engineering		
- Mechanical Engineering		
- Civil Engineering		
- Computer Engineering		
- Industrial & Systems Engineering		
- Computer Science		
<b>College of Education</b>		
- All programs under Education	IRTE	Accredited in Fall 2010
<b>College of Business &amp; Economics</b>		
- Accreditation at the College level	AACSB	Accredited in Fall 2009
<b>College of Pharmacy</b>		
- Pharmacy	CCAPP	Provisional Accreditation in February 2009
<b>Foundation Program</b>		
- English Program	CEA	Accredited in April 2010

# STUDENTS



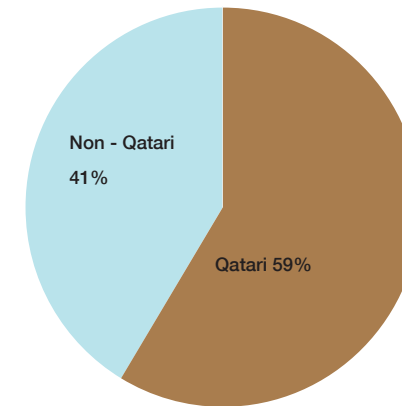
## ABBREVIATIONS

College Code	College Description
AS	Arts and Sciences
BU	Business & Economics
ED	Education
EN	Engineering
FP	Foundation Program
LW	Law
RX	Pharmacy
SI	Sharia and Islamic Studies
00	No College

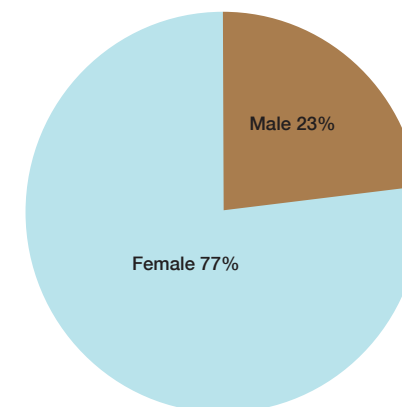
School Code	School Description
GOV	Qatar Government
IND	Qatar Independent
QPA	Qatar Private Arabic
QPI	Qatar Private International
NON	Unknown

Level Code	Level Description
UG	Undergraduate
MA	Master
DP	Diploma
CR	Certificate
FN	Foundation

Registered Students by Nationality



Registered Students by Gender





## REGISTERED STUDENTS BY ACADEMIC LEVEL, COLLEGE, MAJOR, NATIONALITY AND GENDER

	Qatari		Non-Qatari		Total		Qatari		Non-Qatari		Total
	M	F	M	F			M	F	M	F	
<b>Foundation Program</b>	<b>321</b>	<b>1470</b>	<b>412</b>	<b>854</b>	<b>3057</b>	Mass Communication	5	110	24	81	<b>220</b>
Foundation Sport Science	8	9	12	1	30	Mathematics	-	1	-	2	3
Foundation-Art	48	662	62	318	1090	Pre-Biomedical	-	8	-	26	34
Foundation-Business & Economics	124	358	139	100	721	Social Work	-	51	-	10	61
Foundation-Education	-	52	-	15	67	Sociology	-	55	-	6	61
Foundation-Engineering	99	128	139	114	480	Statistics	2	24	6	20	52
Foundation-Law	29	96	4	14	143	<b>Business &amp; Economics</b>	<b>149</b>	<b>689</b>	<b>195</b>	<b>255</b>	<b>1288</b>
Foundation-Pharmacy	-	10	-	93	103	Accounting	13	84	44	37	178
Foundation-Science	13	155	56	199	423	Finance	34	117	23	56	230
<b>Undergraduate</b>	<b>512</b>	<b>2953</b>	<b>755</b>	<b>1588</b>	<b>5808</b>	General Business	78	371	107	125	681
<b>Arts and Sciences</b>	<b>86</b>	<b>1258</b>	<b>94</b>	<b>676</b>	<b>2114</b>	Management	23	80	14	24	141
Arabic Language	-	252	-	102	354	Marketing	1	37	7	13	58
Biology	-	12	-	15	27	<b>Education</b>	<b>15</b>	<b>139</b>	<b>9</b>	<b>22</b>	<b>185</b>
Biomedical Sciences	-	6	-	47	53	Art Education	-	77	-	13	90
Chemistry	3	8	7	15	33	General Education	-	6	-	-	6
English Language	-	119	-	69	188	Physical Education	15	45	9	-	69
English Literature & Linguistics	-	20	-	22	42	Primary Education	-	11	-	9	20
Environmental Sciences	2	17	5	18	42	<b>Pharmacy</b>	<b>-</b>	<b>11</b>	<b>-</b>	<b>154</b>	<b>165</b>
Food Science & Nutrition -Nutrition	-	-	-	1	1	General Pharmacy	-	6	-	81	87
General Arts	9	94	15	56	174	Pharmacy	-	5	-	73	78
General Science	1	11	10	38	60	<b>Law</b>	<b>58</b>	<b>193</b>	<b>22</b>	<b>35</b>	<b>308</b>
General Sport Science	1	2	1	-	4	Law	57	191	22	35	305
Geography-Urban Planning	16	62	6	21	105	Law & Sharia	1	2	-	-	3
History	32	270	7	46	355						
Human Nutrition	-	20	-	47	67						
Information-Library Science	1	2	-	-	3						
International Affairs	14	114	13	34	175						

## REGISTERED STUDENTS BY ACADEMIC LEVEL, COLLEGE, MAJOR, NATIONALITY AND GENDER

	Qatari		Non-Qatari		Total		Qatari		Non-Qatari		Total
	M	F	M	F			M	F	M	F	
<b>Engineering</b>	<b>131</b>	<b>289</b>	<b>387</b>	<b>338</b>	<b>1145</b>	<b>Master</b>	<b>18</b>	<b>46</b>	<b>43</b>	<b>43</b>	<b>150</b>
Architectural Engineering	-	26	-	17	43	<b>Education</b>	<b>1</b>	<b>12</b>	<b>3</b>	<b>9</b>	<b>25</b>
Architecture	-	17	-	25	42	Education Leadership	1	10	3	8	22
Chemical Engineering	19	23	44	76	162	Special Education	-	2	-	1	3
Civil Engineering	24	-	106	-	130	<b>Business &amp; Economics</b>	<b>11</b>	<b>23</b>	<b>16</b>	<b>16</b>	<b>66</b>
Computer Engineering	-	68	-	53	121	Business Administration	11	23	16	16	66
Computer Science	14	41	25	49	129	<b>Engineering</b>	<b>6</b>	<b>11</b>	<b>24</b>	<b>18</b>	<b>59</b>
Electrical Engineering	20	10	89	29	148	Computing	1	8	12	12	33
General Engineering	27	25	52	29	133	Engineering Management	5	2	12	2	21
Industrial and Systems Eng.	-	79	-	60	139	Urban Planning and Design	-	1	-	4	5
Mechanical Engineering	27	-	71	-	98	<b>Certificate</b>	<b>-</b>	<b>1</b>	<b>25</b>	<b>23</b>	<b>49</b>
<b>Sharia and Islamic Studies</b>	<b>73</b>	<b>374</b>	<b>48</b>	<b>108</b>	<b>603</b>	<b>Arts and Sciences</b>	<b>-</b>	<b>-</b>	<b>25</b>	<b>21</b>	<b>46</b>
Dawa	4	74	6	19	103	Arab Lang for Non-Nat. Speaker	-	-	25	21	46
General Sharia	24	45	12	15	96	<b>No College Designated</b>	<b>-</b>	<b>1</b>	<b>-</b>	<b>2</b>	<b>3</b>
Islamic Studies	18	125	10	26	179	Undeclared	-	1	-	2	3
Origin of Religion	5	71	3	20	99	<b>Total</b>	<b>852</b>	<b>4483</b>	<b>1250</b>	<b>2534</b>	<b>9119</b>
Sharia	22	59	17	28	126						
<b>Diploma</b>	<b>1</b>	<b>13</b>	<b>15</b>	<b>26</b>	<b>55</b>						
<b>Education</b>	<b>1</b>	<b>13</b>	<b>15</b>	<b>26</b>	<b>55</b>						
Early Childhood	-	-	-	1	1						
Primary Education	-	8	-	16	24						
Secondary Education	1	3	8	5	17						
Special Education	-	2	7	4	13						

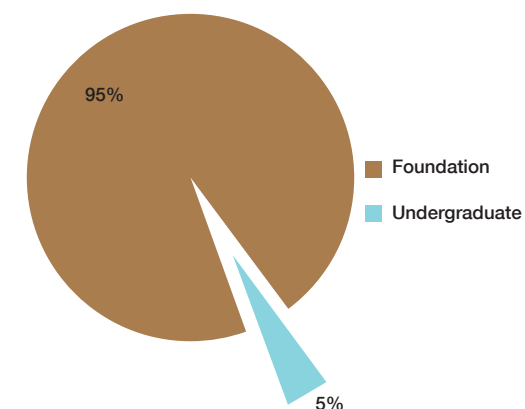
## REGISTERED STUDENTS BY COUNTRY

<b>Africa</b>	<b>985</b>	<b>Asia</b>	<b>7993</b>	<b>Europe</b>	<b>39</b>
Algeria	53	Afghanistan	3	Bosnia and Herzegovina	9
Benin	2	Azerbaijan	1	Croatia (Hrvatska)	1
Burkina Faso	2	Bahrain	129	Czech Republic	1
Cameroon	1	Bangladesh	61	Germany	2
Chad	7	China	2	Hungary	1
Comoros	8	Cyprus	2	Ireland	1
Djibouti	8	India	51	Italy	3
Egypt	393	Indonesia	4	Kosovo	1
Eritrea	13	Iran	224	Macedonia	1
Ethiopia	5	Iraq	108	Netherlands	1
Gambia	1	Japan	1	Romania	1
Ghana	6	Jordan	426	Slovenia	1
Kenya	5	Korea (North)	2	Ukraine	2
Libya	16	Korea (South) (Republic)	5	United Kingdom (Grea Britain)	13
Mali	2	Kuwait	14	Yugoslavia	1
Mauritania	35	Laos	1	<b>North America</b>	<b>62</b>
Morocco	8	Lebanon	48	Canada	21
Namibia	1	Malaysia	1	Mexico	1
Niger	1	Mongolia	1	United States	40
Nigeria	6	Nepal	2	<b>Oceania</b>	<b>3</b>
Senegal	3	Oman	182	Australia	1
Sierra Leone	1	Pakistan	91	New Zealand	2
Somalia	77	Palestine	552	<b>Others</b>	<b>37</b>
South Africa	1	Philippines	9	Qatari Travel Document	35
Sudan	278	Qatar	5335	Unknown	2
Tanzania	4	Russian Federation	2	<b>Total</b>	<b>9119</b>
Tunisia	48	Saudi Arabia	149		
		Singapore	1		
		Sri Lanka	1		
		Syria	171		
		Thailand	3		
		Turkey	8		
		United Arab Emirates	33		
		Vietnam	2		
		Yemen	368		

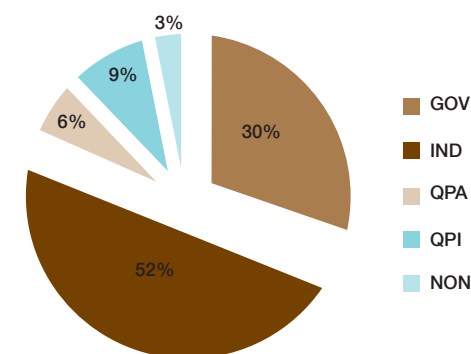
## ADMISSION STATISTICS BY ACADEMIC LEVEL, NATIONALITY AND GENDER

	Qatari		Non-Qatari		Total
	M	F	M	F	
<b>Foundation &amp; Undergraduate</b>					
Applied	548	1551	831	1150	4080
Admitted from Applied	406	1164	494	843	2907
<b>% of Admitted from Applied</b>	<b>74%</b>	<b>75%</b>	<b>59%</b>	<b>73%</b>	<b>71%</b>
Registered from Applied	257	1051	367	719	2394
<b>% of Registered from Admitted</b>	<b>63%</b>	<b>90%</b>	<b>74%</b>	<b>85%</b>	<b>82%</b>
<b>Diploma</b>					
Applied	1	20	36	44	101
Admitted	1	17	9	14	41
<b>% of Admitted from Applied</b>	<b>100%</b>	<b>85%</b>	<b>25%</b>	<b>32%</b>	<b>41%</b>
Registered	-	10	3	10	23
<b>% of Registered from Admitted</b>	<b>0%</b>	<b>59%</b>	<b>33%</b>	<b>71%</b>	<b>56%</b>
<b>Master</b>					
Applied	23	66	63	57	209
Admitted	13	37	26	27	103
<b>% of Admitted from Applied</b>	<b>57%</b>	<b>56%</b>	<b>41%</b>	<b>47%</b>	<b>49%</b>
Registered	9	26	24	23	82
<b>% of Registered from Admitted</b>	<b>69%</b>	<b>70%</b>	<b>92%</b>	<b>85%</b>	<b>80%</b>
<b>Certificate</b>					
Applied	-	3	37	36	76
Admitted	-	-	36	31	67
<b>% of Admitted from Applied</b>	<b>-</b>	<b>0%</b>	<b>97%</b>	<b>86%</b>	<b>88%</b>
Registered	-	-	25	21	46
<b>% of Registered from Admitted</b>	<b>-</b>	<b>-</b>	<b>69%</b>	<b>68%</b>	<b>69%</b>

New Admitted: Foundation Vs. Undergraduate



New Admitted by School Type (FN & UG)



## NEW ADMITTED BY EXEMPTION TYPE, NATIONALITY AND GENDER

	Qatari		Non-Qatari		Total	%*
	M	F	M	F		
Full Exemption	15	57	34	32	138	5%
Exempted from English	91	259	131	226	707	25%
Exempted from Math	39	113	53	83	288	10%
Exempted from Computer	30	95	39	52	216	8%

\*Percentage is calculated out of the total of newly admitted students, excluding those admitted into the College Sharia and Islamic Studies and the Arabic language program

## SCHOLARSHIP BY TYPE AND COLLEGE

Scholarships Type	AS	BU	EN	FP	LW	RX	SI	Total
Amiri Academic Excellence	1	-	9	9	-	1	-	20
Amiri Diwan	1	1	3	19	-	4	2	30
Distinction Performance	5	6	7	-	-	2	-	20
GCC Embassies	1	1	-	37	-	-	-	39
GCC Qatari Certificate	3	2	1	67	-	-	1	74
GCC Qatari Husband	-	-	-	14	-	-	-	14
GCC Qatari Mother	-	-	-	1	-	-	-	1
Islamic World Citizens	11	7	11	28	1	-	10	68
Islamic World Embassies	3	6	12	30	-	3	2	56
Qatar Inhabitants	-	1	-	9	-	-	-	10
Qatar University Staff	3	-	1	10	1	1	-	16
Qatari Mother Children	3	-	1	30	-	1	1	36
Short Scholarships	37	-	-	-	-	-	-	37
<b>Total</b>	<b>68</b>	<b>24</b>	<b>45</b>	<b>254</b>	<b>2</b>	<b>12</b>	<b>16</b>	<b>421</b>

## TOP 10 BACHELOR PROGRAMS WITH THE HIGHEST NUMBER OF REGISTERED STUDENTS BY GENDER

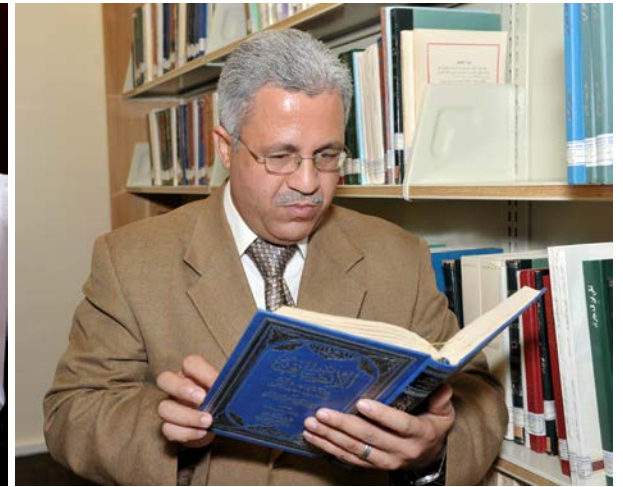
Men's Campus	Total	%
Civil Engineering	130	10%
Electrical Engineering	109	9%
Mechanical Engineering	98	8%
Law	79	6%
Chemical Engineering	63	5%
Finance	57	4%
Accounting	57	4%
Sharia	39	3%
History	39	3%
Computer Science	39	3%

Women's Campus	Total	%
Arabic Language	354	8%
History	316	7%
Law	226	5%
Mass Communication	191	4%
English Language	188	4%
Finance	173	4%
Islamic Studies	151	3%
International Affairs	148	3%
Industrial and Systems Eng.	139	3%
Accounting	121	3%
Computer Engineering	121	3%

## TOP 10 BACHELOR PROGRAMS WITH THE HIGHEST NUMBER OF REGISTERED STUDENTS BY NATIONALITY

Qatari	Total	%
History	302	9%
Arabic Language	252	7%
Law	248	7%
Finance	151	4%
Islamic Studies	143	4%
International Affairs	128	4%
English Language	119	3%
Mass Communication	115	3%
Management	103	3%
Accounting	97	3%

Non-Qatari	Total	%
Chemical Engineering	120	5%
Electrical Engineering	118	5%
Civil Engineering	106	5%
Mass Communication	105	4%
Arabic Language	102	4%
Accounting	81	3%
Finance	79	3%
Computer Science	74	3%
Pharmacy	73	3%
Mechanical Engineering	71	3%



## FACULTY AND STAFF

### Teaching Staff by Years of Work in Qatar University, Nationality and Gender

	Qatari		Non-Qatari		Total
	M	F	M	F	
<=5	12	23	256	115	406
6 TO 10	8	22	46	20	96
11 TO 15	9	17	15	1	42
16 TO 20	18	13	8	3	42
>20	34	47	1	-	82
<b>Total</b>	<b>81</b>	<b>122</b>	<b>326</b>	<b>139</b>	<b>668</b>



## TEACHING STAFF BY COUNTRY

<b>Africa</b>	<b>112</b>
Algeria	5
Egypt	65
Libya	1
Mauritania	1
Morocco	4
Senegal	1
Sierra Leone	1
Sudan	17
Tunisia	17
<b>North America</b>	<b>139</b>
Canada	41
United States	98
<b>Oceania</b>	<b>22</b>
Australia	18
New Zealand	4
<b>South America</b>	<b>2</b>
Brazil	1
Colombia	1

<b>Asia</b>	<b>341</b>
Bahrain	1
Bangladesh	5
China	1
India	19
Indonesia	1
Iran	5
Iraq	11
Japan	2
Jordan	31
Kazakhstan	1
Korea (South) (Republic)	1
Lebanon	10
Malaysia	3
Maldives	1
Nepal	1
Pakistan	6
Palestine	8
Philippines	2
Qatar	203
Russian Federation	1
Saudi Arabia	1
Sri Lanka	1
Syria	13
Turkey	8
Yemen	5

<b>Europe</b>	<b>52</b>
Albania	1
Austria	1
Bosnia and Herzegovina	1
Bulgaria	2
Czech Republic	1
Finland	1
France	2
Germany	2
Ireland	1
Italy	1
Norway	1
Sweden	2
Switzerland	1
United Kingdom	35
<b>Total</b>	<b>668</b>





## FACULTY AND STAFF BY RANK AND TITLE

<b>Teaching Staff</b>		<b>668</b>
Professor	51	
Associate Professor	118	
Assistant Professor	163	
Lecturer	223	
Teaching Assistant	113	
<b>Administrators</b>		<b>76</b>
President	1	
Vice President	5	
Director	27	
Dean	7	
Associate Dean	7	
Department Head	29	



<b>Staff</b>		<b>858</b>	
<b>Academic</b>		<b>45</b>	
Acting	2	Executive Assistant	1
Analyst	1	IT	1
Artistic Staff	1	Legal	1
Assistant Dean	2	Manager	1
Associate Director	1	Researcher	19
Consultant	1	Section Head	3
Coordinator	2	Senior Librarian	1
Counselor	3	Specialist	3
		Unit Head	2
<b>Non Academic</b>		<b>825</b>	
Accountant	26	Executive Staff	3
Acting	2	General Service	43
Administration Coordinator	12	IT	27
Administrative Assistant	85	Labor	29
Administrator	7	Librarian	24
Analyst	9	Manager	6
Application Consultant	5	Medical	10
Artistic Staff	1	Oceanographer	1
Assistant Director	1	Officer	1
Clerk	19	Researcher	3
Consultant	3	Section Head	53
Coordinator	159	Specialist	102
Counselor	1	Sports Specialist	4
Creative Staff	7	Sports Therapists	1
Editor	5	Store Custodian	5
Engineer	21	Supervisor	15
Executive Assistant	9	Technician	95
		Trainer	1
		Unit Head	12
		Vessel Staff	6

# GRADUATES



## GRADUATES

### Graduates by Academic Level, College, Major, Nationality and Gender

	Qatari		Non-Qatari		Total	Avg. GPA
	M	F	M	F		
<b>Undergraduate</b>	<b>118</b>	<b>546</b>	<b>103</b>	<b>263</b>	<b>1030</b>	<b>2.93</b>
<b>Arts and Sciences</b>	<b>24</b>	<b>268</b>	<b>6</b>	<b>110</b>	<b>408</b>	<b>2.85</b>
Arabic Language	-	52	-	13	65	2.77
Biology	-	4	-	4	8	2.46
Biomedical Sciences	-	3	-	20	23	3.25
Chemistry	-	-	-	2	2	3.23
English Language	-	31	-	24	55	3.04
Geography-Urban Planning	8	24	1	8	41	2.89
History	13	94	1	15	123	2.66
Human Nutrition	-	5	-	7	12	3.01
Information-Library Science	1	2	-	-	3	1.82
International Affairs	2	21	2	5	30	3.13
Mass Communication	-	12	-	8	20	3.16
Mathematics	-	-	-	2	2	2.58
Sociology	-	20	-	1	21	2.86
Statistics	-	-	2	1	3	2.29
<b>Business &amp; Economics</b>	<b>37</b>	<b>107</b>	<b>28</b>	<b>59</b>	<b>231</b>	<b>3</b>
Accounting	6	25	12	13	56	2.97
Finance	21	43	5	31	100	3.05
Management	9	26	8	9	52	2.89
Marketing	1	13	3	6	23	3.13
<b>Education</b>	<b>8</b>	<b>39</b>	<b>5</b>	<b>3</b>	<b>55</b>	<b>2.87</b>
Art Education	-	24	-	3	27	2.9
Physical Education	8	15	5	-	28	2.84
<b>Law</b>	<b>12</b>	<b>21</b>	<b>2</b>	<b>3</b>	<b>38</b>	<b>3.24</b>
Law	12	20	2	3	37	3.26
Law & Sharia	-	1	-	-	1	2.51
<b>Pharmacy</b>	<b>-</b>	<b>3</b>	<b>-</b>	<b>15</b>	<b>18</b>	<b>3.22</b>
Pharmacy	-	3	-	15	18	3.22

	Qatari		Non-Qatari		Total	Avg. GPA
	M	F	M	F		
<b>Engineering</b>	<b>21</b>	<b>47</b>	<b>53</b>	<b>45</b>	<b>166</b>	<b>2.97</b>
Architectural Engineering	-	6	-	8	14	3.06
Chemical Engineering	7	5	4	10	26	3.12
Civil Engineering	1	-	21	-	22	2.99
Computer Engineering	-	18	-	7	25	3.11
Computer Science	3	5	5	9	22	2.64
Electrical Engineering	5	-	10	-	15	2.89
Industrial and Systems Eng.	-	13	-	11	24	3.05
Mechanical Engineering	5	-	13	-	18	2.86
<b>Sharia and Islamic Studies</b>	<b>16</b>	<b>61</b>	<b>9</b>	<b>28</b>	<b>114</b>	<b>2.84</b>
Dawa	-	1	-	-	1	2.72
Origin of Religion	1	31	-	12	44	2.97
Sharia	15	29	9	16	69	2.76
<b>Diploma</b>	<b>1</b>	<b>2</b>	<b>10</b>	<b>15</b>	<b>28</b>	<b>3.3</b>
<b>Education</b>	<b>1</b>	<b>2</b>	<b>10</b>	<b>15</b>	<b>28</b>	<b>3.3</b>
Primary Education	-	2	-	10	12	3.33
Secondary Education	1	-	5	1	7	3.36
Special Education	-	-	5	4	9	3.22
<b>Masters</b>	<b>3</b>	<b>10</b>	<b>14</b>	<b>16</b>	<b>43</b>	<b>3.49</b>
<b>Business &amp; Economics</b>	<b>3</b>	<b>7</b>	<b>13</b>	<b>13</b>	<b>36</b>	<b>3.44</b>
Business Administration	3	7	13	13	36	3.44
<b>Education</b>	<b>-</b>	<b>3</b>	<b>1</b>	<b>3</b>	<b>7</b>	<b>3.74</b>
Education Leadership	-	3	1	3	7	3.74
<b>Total</b>	<b>122</b>	<b>558</b>	<b>127</b>	<b>294</b>	<b>1101</b>	<b>2.96</b>

## GRADUATES BY COUNTRY

<b>Africa</b>	<b>66</b>	<b>Asia</b>	<b>1020</b>	<b>Europe</b>	<b>3</b>
Algeria	7	Bahrain	13	Bosnia and Herzegovina	1
Burkina Faso	2	Bangladesh	4	Croatia (Hrvatska)	1
Djibouti	5	India	7	United Kingdom (Great Britain)	1
Egypt	23	Iran	31		
Eritrea	1	Iraq	15	<b>North America</b>	<b>4</b>
Ethiopia	1	Jordan	71	Canada	1
Ghana	1	Kuwait	2	United States	3
Libya	1	Lebanon	6		
Mauritania	4	Nepal	1	<b>Oceania</b>	<b>1</b>
Morocco	2	Oman	22	Australia	1
Somalia	4	Pakistan	6		
Sudan	10	Palestine	85	<b>Others</b>	<b>7</b>
Tunisia	5	Philippines	3	Qatari Travel Document	7
		Qatar	680		
		Saudi Arabia	9		
		Senegal	1	<b>Total</b>	<b>1101</b>
		Syria	28		
		United Arab Emirates	6		
		Yemen	30		

# LIBRARY



## Library Collection

Description	Titles	Volumes
Arabic Collection	50,321	175,475
English Collection	60,283	106,088
Arabic Periodicals (Print Archive)	572	-
English Periodicals (Print Archive)	2,389	-
CDs + DVDs +Videos (VHS)	235	-
Qatari Collection (1)	386	393
Original Manuscripts (2)	13	-
Special Collection (3)	246	-
e-Resources Subscriptions (Databases)	46	-
Indexed and full text e-journals	87,187	-

(1) A collection of photos, publications, and productions about Qatar.

(2) Thirteen rare Manuscripts, which have been donated to Qatar University.

(3) A rare collection of first-edition references, in addition to periodicals and manuscripts on various topics.

## Library Staff

Position	Number of Staff
Acting Director	1
Administrative Assistant	1
Acquisition	3
Cataloging	3
Gifts and Exchange	1
Photocopying	1
Planning & Assessment	1
Public Services/Circulation	7
Reference & Instructional Services	10
Stacks & Binding	1
System Information Technology	3
User Services	3
<b>Total</b>	<b>35</b>



## LIST OF SUBSCRIBED E-DATABASES

### eBook

ebrary  
Elsevier eBook Collection  
Micromedex Healthcare Series  
Springer eBook Collection 2005-2010  
STAT!Ref

### Reference

Britanica EncyclopediaOnline  
IEEE - POP ALL  
Oxford Islamic Studies  
Oxford Reference Online  
Oxford Scholarship Online : Business and Management  
Oxford Scholarship Online : Economics  
Oxford Scholarship Online : Linguistics  
Oxford Scholarship Online : Literature  
Oxford Scholarship Online : Political Science

### Journal

Academic Source Complete  
ACM Digital Library  
ASME Journal Package  
Business Source Complete  
EastLaw - Arabic  
EduSearch - Arabic  
EIU (COUNTRY REPORT, VWSWIRE )  
Elsevier - content Fee & EJ Freedom Collection

### Journal

Elsevier Journals - E-only Fee  
Emerald Mgmt Plus including Engineering  
IEEE - ASPP  
JSTOR : Arts and Science I  
JSTOR : Arts and Science II  
JSTOR : Arts and Science VII  
JSTOR : Business  
JSTOR : Business II  
Legal Collection  
Lexis Nexis Academic  
Literature Online (LION)  
MathSciNet  
Project Muse Premium collection  
Proquest 5000 Image Package  
ProQuest Digital Dissertations  
ProQuest Sociology  
PsycARTICLES  
Sage Premier Journal  
SCOPUS  
SPORTDiscus  
Springer Journal Core Collection  
Tylor and Francis ST and SSH Libraries  
Web of Knowledge  
Westlaw International  
Wiley Blackwell



# FINANCE



11240.32  
+ 542.25  
+ 1241.28  
+ 640.39  
+ 428.45

-----  
14092.69

+ 1445.65  
+ 1204.25  
+ 2008.6  
+ 1804.

-----  
2055

21  
2.68  
547.20  
672.08

-----  
31142.45

+ 3542.55  
+ 1352.14  
+ 2100.36  
+ 854.94

-----  
38992.44

+ 2  
+  
+  
12  
54

-----  
59.14

1312.25  
954.36  
874.48  
+ 689.45

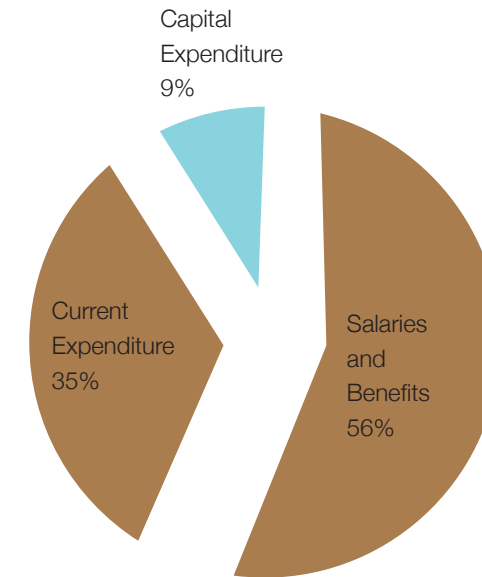
-----  
30589.68

7761.67

## FINANCE

### Approved Budget

	Approved Budget (QR)
Salaries and Benefits (First Chapter)	498,683,903
Current Expenditure (Second Chapter)	310,640,000
Capital Expenditure (Third Chapter)	80,750,000
<b>Total</b>	<b>890,073,903</b>



### Budget by Cost Center

	2nd and 3rd Chapter
Office of the President	2,282,519.00
The Social and Economic Survey Research	7,519,090.00
External Relations	3,532,589.49
Office of the VP and Chief Financial Officer	418,000.00
Finance	25,330,927.37
Information Technology Services	33,571,065.63
Procurement	1,068,163.50
Human Resources	10,496,310.00
Business Operations	89,867,164.72
Health Clinic	731,750.50
Housing	12,578,940.00
Office of VP for Institutional Planning and Development	3,043,472.57
Office of VP and Chief Academic Officer	4,132,542.50
Office of Faculty and Instructional Development	485,567.80
Office of Continuing Education	991,191.94
Office of Library	12,752,996.41

	2nd and 3rd Chapter
College of Arts and Sciences	20,162,065.26
College of Engineering	18,761,561.03
College of Business & Economics	3,241,623.97
College of Law	1,204,101.50
College of Sharia and Islamic Studies	1,268,617.51
College of Education	2,253,433.57
College of Pharmacy	5,340,648.29
Foundation Program	4,525,733.74
Core Curriculum Committee	259,834.00
Office of VP for Student Affairs	19,962,903.99
Office of VP for Research	34,273,372.87
Office of Academic Research	5,328,135.81
Central Laboratories Unit	4,162,003.70
Environmental Studies Center	54,901,547.79
Gas Processing Center	70,980.00
Materials Technology Unit	6,871,145.54

**Total**

**391,390,000.00**

## PHYSICAL FACILITIES



## PHYSICAL FACILITIES

### New Library Building

Located in the men's section. It is still under construction and expected to be finished by November 2011. It is to be used for learning and reading functions. It houses reading halls, study rooms, meeting rooms, auditorium, display area, stores, some food services and security rooms.

### New School of Business Building

Located in the men's section. Construction was completed in September 2011 and has been in operation since then. It is used for learning functions and student activities. It houses lecture halls, seminar rooms, labs, meeting rooms, faculty staff offices, stores, some food services and security rooms.

### New Research Complex

Located in the men's section. It is still under construction, and expected to be finished by March 2012. The new Research Complex will be used for learning, testing, and administrative functions. It is divided into 7 research units and main administration unit. It houses lecture rooms, an auditorium, labs, meeting rooms, staff offices, storage rooms, some food services and security rooms.

### Food Court

Located in the women's section, in front of the College of Engineering Building. It has been in operation since March 2009. It is used as a location for fast food services as well as for light entertainment activity. It houses different types of fast food facilities, soft drinks, coffee shop and cafeterias. It has a bookstore, bank, Internet Café and some administrative offices.

### Women's Engineering College

Located in the women's section behind the Women's Activities Building. It has been in use since January 2009. The facility is utilized for learning functions, and some students' activities. It houses lecture rooms, labs, auditoriums, faculty member offices, meeting rooms, and security.

### Men's Engineering College

Located in the men's section in the middle of Qatar University Campus. It has been operational since 1984. It starts from section F through section J. It is used for learning functions and some students' activities. It houses lecture rooms, labs, auditoriums, faculty member offices, meeting rooms and some food services.

### Men's Engineering Workshop Building

Located in the men's section at the end of the Men's College of Engineering. It has been in use since 1984. It is used for learning and facility functions. It houses offices.

### Men's Engineering Annex Building

Located in the men's section beside the Men's College of Engineering. It has been in use since 1984. It is used for learning and administrative functions. It houses computer labs and offices.

### Men's College of Arts and Science

Located at the men's section in the middle of Qatar University Campus. It has been in use since 1984. It starts from section A through section E. It is used for learning functions and some

student's activities. It houses lecture rooms, labs, auditoriums, faculty member offices, meeting rooms and some food services.

### Women's College of Arts and Science

Located at the women's section. It has been in use since 2000. It is within the central structure, and divided into 6 sections (starting from section A through section F) and each section serves a branch under the college. It is used for learning functions and some student's activities. It houses lecture rooms, labs, faculty member offices, meeting rooms and some food services.

### Business Operations Department (BOD)

Located in the women's section near the Men's College of Engineering. It has been in use since 1984. It operates most of the systems in the University, so it is therefore used for administrative and technical functions. It houses staff offices, labs, port cabins, meeting rooms, workshops, and security rooms.

### Information Technology Services (ITS)

Located in the men's section besides the Administration building. It has been in use since 1986. It is committed to collaborate with the Qatar University community to provide IT products and services, and enables the University to uphold its high standards in teaching, learning and outreach. It houses staff offices, servers rooms and meeting rooms.

### Administration Building

Located in the men's section at the main road. It has been in use since 1984. It is used for administrative function and instructions. It houses offices and meeting rooms.

### Educational Technology Building

Located in the men's section, in front of the College of Men's Arts and Sciences. It has been in use since 1984. It is used for learning functions, and some student's activities. It houses lecture rooms, labs, faculty member offices, meeting rooms and some food services.

### Main Men's Building

Located in the men's section beside the Men's College of Arts and Sciences. It has been in use since 1984. It is used for learning functions, and some student's activities. It houses lecture rooms, labs, faculty member offices, meeting rooms and some food services.

### Main Women's Building

Located in the women's section besides the Men's College of Arts and Sciences. It has been in use since 1984. It is used for learning functions, and some student's activities. It houses lecture rooms, labs, faculty member offices, meeting rooms, some food services.

### Men's Foundation Building

Located in the men's section at the north end of the campus on the main road. It has been in use since 2004. It is used for learning and administrative functions, and some student's activities. It houses lecture rooms, labs, faculty member offices, meeting rooms and some food services.

### **Women's Foundation Building**

Located in the women's section to the north and most of the west part of the campus. It has been in use since 2004. It is used for learning functions, and some student's activities. It houses lecture rooms, labs, faculty member offices, meeting rooms and some food services.

### **Men's College of Business & Economics**

Located at the men's section on the main road just before the Foundation Building. It has been in use since 2001. It is used for learning functions and some student's activities. It houses lecture rooms, labs, faculty member offices, meeting rooms and some food services.

### **College of Sharia and Islamic Studies/ College of Law Building**

Located in the women's section. It has been in use since 2001. It is used for teaching functions, and student activities. It houses lecture rooms, labs, offices and food services. The third floor is occupied by the College of Business and Economics.

### **Al Bidaa Building**

Located in the women's section. It has been in use since 1995. It is used for learning functions and student's activities. It houses offices, labs, and lecture rooms. Part of the building is used as a kindergarten for children and educational training for students of the College of Education.

### **Women's Car Parking Building**

Located in the women's section. It has been in use since 1993. It is used for service functions. It houses offices and food services. It is considered as a main gate for female students to go to the different women's buildings.

### **Admission and Registration Building**

Located at the northern border of the men's and women's sections. It has been in use since 2003. It is used for administrative functions, especially the subject registry and student's records. It houses offices.

### **Arena Pavilion Complex**

Located at southeast of the men's section on the main road. It has been in use since 1984. It is used for sports and students activities. It houses classrooms, offices, a football stadium and encircling track. It supports occupation of 5000 people.

### **Main Court Pavilion**

Located in the men's section near Arena Pavilion. It has been in use since 1984. It is used for sport activities. It houses offices and other facilities. It has a capacity of accommodating 900 people.

### **Tennis Court Pavilion**

Located in the men's section on the main road above the Arena Complex. It has been in use since 1984. It is used for sports and students activities. It houses offices, playgrounds for tennis, handball, and basketball, and security. It has a capacity of 900 people.

### **Swimming Pool Pavilion**

Located in the men's section near the Arena Pavilion Complex. It has been in use since 1984. It is used for sports and students activities. It houses offices, 3 swimming pools, a gymnasium hall, and security. It can accommodate 1500 people.

### **Men's Library Building**

Located toward the north of the men's section. It has been in use since 1990. It is used for facility functions. It houses offices and reading halls.

### **Women's Library and Exhibition Hall Center Building**

Located at the southern border of the men's and women's sections. It has been in use since 1984. It is used for facility functions, and it is considered as the distribution building for the students' textbooks. It houses offices and reading halls.

### **Mosque (Men's)**

Located in the men's section. It has been in use since 1990. It is used for religious functions. It houses a prayer hall and service rooms.

### **Medical Clinic**

Located in the women's section beside the Women's Activities Building. It has been in use since 1998. It is used for treatments and medical functions. It houses offices, testing rooms, and a pharmacy.

### **Old Central Services Unit**

Located in the men's section in front of the Business Operation Department. It has been in use since 1984. The Central Services Unit is used for service functions. It houses service machines such as chillers.

### **Men's Activities Building**

Located in the men's section below the Administration Building. It has been in use since 1986. The Men's Activity Building is used for External Relations and Men's Student Activities, including career services. It houses offices, halls, entertainment facilities and some food services.

### **Women's Activities Building**

Located in the women's section. It has been in use since 1986. The Women's Activities Building is used for Women's Student's Activities, Career Services, the Student Counseling Center, and the Student Learning Support Center. It houses offices, labs, class rooms, entertainment facilities and some food services.

### **Women's Sports Facility Building**

Located in the women's section. It has been in use since 1986. It is used for sports and student activities. It houses a main playground, sports halls, lecture rooms, and some food services.

### **Bookstore**

Located north of the men's section. It has been in use since 2002. It is used for service functions and houses offices.

### **Islamic Research Center**

Located in the men's section. It has been in use since 2004. It is used for research functions and houses offices.

### **Research Facilities Buildings**

Located outside the campus (Off-Campus), at the original site of the old campus. They have been in use since 1984. They are used for research and testing functions, and houses labs and offices.

### **Materials Technology Unit**

Located in the men's section. It has been in use since 1984. It is used for testing and teaching, and research functions. It houses classrooms, labs and offices.

### **Central store**

Located in the men's section at the junction separating the main road and the road to the women's section. It has been in use since 1984. It is used for service functions. It is the main store in the university and is overseen by the Business Operations department. It houses offices and materials.

### **Maintenance Store**

Located in the men's section. It has been in use since 1984. It is used for service functions and houses offices, stores and workshops.

### **Chemical Store**

Located in the men's section. It has been in use since 1994. It is used for research functions, and houses offices and research labs.





